



Hotel & Spa

Spring/Summer Tariff 2023

The Cliff Hotel & Spa

At The Cliff Hotel & Spa we take pride in knowing that as well as offering accommodation with stunning views of the Pembrokeshire coastline, we have great facilities and services that we can offer our guests. From fine food to specially selected wines, every detail matters to us so that we can ensure your stay with us is a memorable one.

The Cliff Hotel & Spa comprises:

- 76 Ensuite Bedrooms, many with stunning sea views.
- The Carreg, our stylish and modern Restaurant, with panoramic views.
- The Point Bar & Lounge, a comfortable place to enjoy our coastal location.
- Ballroom and Island Bar with panoramic sea views ideal for weddings and all other functions.
- Luxurious Spa with Heated Loungers, Hydro Pool, Sauna, Hot Tub, and Steam Room.
- The spa also offers a wide selection of treatments for you to enjoy.
- Well equipped gym.
- 2 Meeting Rooms available for private hire from corporate to private parties
- 9 Hole Golf Course with panoramic views of the Welsh Coastline.







Luxury Seaview Suite with Hot Tub

The largest rooms within the hotel offering a spacious seating area, super king-sized beds, en-suite with separate bath and shower with your own private balcony with hot tub.



Sea View Suite

All sea-view suites offer luxurious panoramic views of the beautiful rugged coastline, overlooking Poppit Sands, Cardigan Island and the golf course. Take these views in from your own private lounge.



Sea View Balcony

Available with either a Balcony or Terrace. Be captivated by the stunning sea views from the comfort of your own room. Watch the sunset over Pembrokeshire and Ceredigion's rugged coastline.



Premium Sea View with Balcony

Larger than our Standard Sea View Rooms, our Premium Sea View Rooms include a comfortable seating area with a balcony or terrace to take in the stunning sea views and watch the sunset.



Premium Sea View

Larger than our Standard Sea View Rooms, our Premium Sea View Rooms include a comfortable seating area take in the stunning sea views and watch the sunset.



Standard Sea View

These rooms are beautifully furnished and can be Double or Twin bedded and are available for single or double occupancy. Bed type must be specified at the time of booking. Some of our rooms can accommodate an extra bed or travel cot.



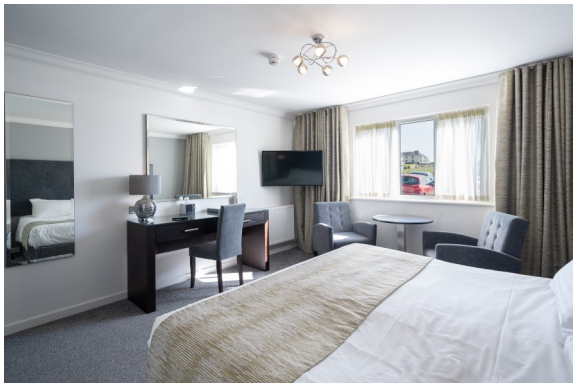
Standard Family

These non-sea view rooms can accommodate up to 4 occupants with a King and two Twin beds available. These rooms are perfect for families and small groups exploring beautiful West Wales.



Sea View Family

These rooms can accommodate up to 4 occupants with double, twin or bunk beds available. Perfect for families and small groups exploring beautiful West Wales, a room where you can enjoy the view from your own balcony.



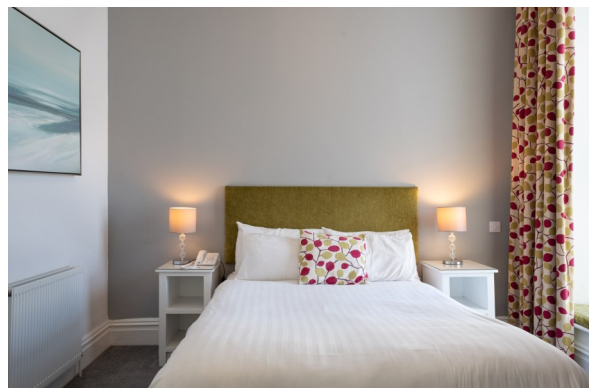
Executive

These Rooms are located on the first floor. Perfect for both leisure guests and business travellers. They are available with a super king-sized bed OR twin beds and are available for single or double occupancy. Must be specified at time of booking.



Standard Double/Twin

These non-sea view are larger than our Economy Rooms and contain everything you need for a comfortable stay. These rooms are rear-facing, they overlook other parts of the property, including rooftops, external walls and light wells.



Economy Double

These cosy non-sea view rooms contain everything you need for a comfortable stay. Overlooking other parts of the property, including rooftops, external walls and light wells



Single

A comfortable Single non-sea view room with modern decor, contains everything you need for a comfortable stay. All single rooms are located on the first floor, accessible by lift and stairs.

Tariff

All prices per room per night based on double occupancy.

Other offers and packages can be found on our website
www.cliffhotel.com

	Bed and Breakfast from:	Dinner*, Bed and Breakfast from:
Luxury Seaview Suite with Hot Tub	£380.00 (No Single Occ Available)	£435.00 (No Single Occ Available)
Seaview Suite	£220.00 (No Single Occ Available)	£275.00 (No Single Occ Available)
Seaview Premium Room with Balcony	£184.00 (£159 Single)	£239.00 (£187 Single)
Premium Room	£168.00 (£143 Single)	£223.00 (£171 Single)
Seaview Family Room	£184.00 (No Single Occ Available)	£239.00 (Children's dinner not included)
Seaview Room with Balcony	£163.00 (£138 Single)	£218.00 (£166 Single)
Seaview Room	£142.00 (£122 Single)	£197.00 (£150 Single)
Executive Room	£131.00 (£106 Single)	£186.00 (£134 Single)
Standard Family Room	£147.00 (No Single Occ Available)	£202.00 (Children's dinner not included)
Standard Room	£110.00 (£90 Single)	£165.00 (£118 Single)
Economy Room	£105.00 (£85 Single)	£160.00 (£113 Single)
Single Room	£75.00	£130.00
Children 5 -12 years/ < 5 years	£20/ £10	Not applicable
Extra Adults	£30.00	Not applicable

*Dinner, Bed & Breakfast rates include £30 per person allowance towards our A la Carte Menu. Drinks not included.

Unless otherwise stated, residents are entitled to a one hour per night of your stay complimentary use of the Spa facilities. However, this must be pre-booked prior to arrival to avoid disappointment and we reserve the right to turn guests away should the spa become full to capacity.

Dogs are permitted in a limited number of guest bedrooms and must not be left unsupervised. Guests are required to bring their own bedding for dogs.

There is a £10 charge per dog on the first night and £5 per night thereafter. Please be aware that pets are not permitted in our bar or restaurant, however, we do allow our guests to sit in the tiled area of

The Point Bar & Lounge with their dogs where you can get a reduced food menu and drinks.

Registered guide dogs are permitted throughout the hotel and are accommodated free of charge.

All bookings must be guaranteed with a credit or debit card.

A non-refundable deposit to the value of the first nights stay will be deducted from your credit or debit card at the time of booking.

Some bookings may require full prepayment at the time of booking or additional payment prior to your arrival. All deposits are non-refundable.

Any outstanding charges for accommodation is payable on check-in, other outstanding charges are settled on departure from the hotel. Failure to cancel your booking by the cancellation policy will result in full payment being charged to the debit/credit card the deposit was taken from.

Our standard rate operates a 72-hour cancellation policy, whereby cancellations made within 3 days prior to arrival will be fully charged. Our flexible rate operates a cancellation policy of 9am on the day of arrival, whereby cancellations made after this time will be fully charged.

We recommend that all guests take out appropriate travel insurance to cover any losses made in the case of cancellation. Please note that rates increase based on hotel occupancy, prices shown denote the lowest available rate. Prices correct at time of printing, The Cliff Hotel & Spa reserve the right to alter room prices without notice. For full terms and conditions please visit our website, www.cliffhotel.com





Hotel & Spa

Gwbert, Cardigan, Ceredigion, SA43 1PP

Tel: 01239 613241

www.cliffhotel.com

reservations@cliffhotel.com

April 2023